

ASSEMBLY MANUAL

Evolve 20 EHS Far Infrared Sauna



Pre-Assembly Checklist

Selecting a suitable location

For best results, please place your sauna on a flat level surface. Suitable locations could include the garage, bedroom, sunroom. The sauna can be placed on carpet, tiles, timber flooring or concrete.

For outdoor placement please note that the sauna must go in a covered area to provide protection from direct rainfall, additionally the sauna must be protected by one of our Australian made covers to protect the warranty. Saunas placed outside unprotected will not be covered by our warranty.

Assembly Instructions

Assembly of the sauna will require 2 adults to complete. Please read through the instructions carefully before beginning the assembly process. Should you encounter any issues along the way, please contact us on free phone 0800 86 11 841 (United Kingdom and EU).

1. Keep all liquids away from the sauna during the assembly process.
2. Install the sauna on a flat level surface.
3. Install the sauna in an area that is dry and protected from the weather.
4. Your sauna is a self-contained free standing unit and should not be built into any structure without consultation with Sun Stream Saunas.
5. Please maintain about 3cm clearance from the walls on all sides of the unit.

NB: Please exercise great care when handling the front wall assembly and glass door making sure they do not swing open and break whilst securing in place.



Prepare the Sauna Floor

If you are assembling your sauna on a hard surface floor it is recommended that you apply the included adhesive felt to the bottom of the sauna floor.



Place the sauna Floor Base in the desired location. It is necessary to position the floor out from your walls for assembly and move the sauna following assembly.



PLEASE NOTE: It is important that the sauna floor is level. Checking with a large level is recommended. If the floor is not level, shimming or other remedies should be applied before assembling the sauna.



Front Wall Installation

Ensure that the door heater electrical is protruding from bottom of front wall frame



Position the Front Wall

Lift the front wall into position carefully lowering the bottom of the wall into the channel on the floor base. Prop up one end of the front wall to enable connection of the door heater electrical lead.



**Connect door heater electrical lead
to the floor base.**

Ensure that the threaded cuff is fully screwed
onto the floor base connector.

NOTE:

**Be sure that the wire's connector is fully
inserted into the floor base connector and
that the threaded cuff is fully screwed
onto the floor base connector.**



4 Furniture Bolts

Screw the 2 furniture bolts through the
Front Wall frame into Floor Base
The furniture bolts will require either
a Phillips head screwdriver OR the
allen key included with the sauna
accessories.

There are also 2 furniture bolts to go
through the Front Wall and thread into the
Roof later in the assembly.



Protect Floor Base

As a precaution to protect the floor base, place a business card or similar on the floor base before installing glass panel

Install Right Side Front Wall Glass Panel





Connect Side Wall to Front Wall

Insert Side Wall into the channel of floor base while aligning the slot in Side Wall with edge of Front Wall glass panel.

USE EXTRA CARE fitting the Side Wall to the glass panel



Wood Screw

Use the supplied wood screw and the pre-drilled hole to secure the Side Wall to the Front Wall frame.

Back Wall
Insert back wall into
channel of floor base



Connect the Back Wall to Side Wall

Cinch the two walls together by applying pressure on the outside of the Side Wall with the inside of your knee.



It is helpful if a second person applies pressure against the opposite edge of the back wall. This will help ensure that the two walls remain in contact and the fasteners will connect.



Slide the Back Wall up approx. 3/4" while holding the Side Wall down with your opposite hand. The 2 sets of fasteners for the walls will connect when the back wall is raised sufficiently. When you feel the fasteners connect, slide the Back Wall back down.

NOTE: It is NOT necessary to lift the entire Back Wall. Simply slide the Back Wall upward at the back corner of the sauna to connect to the Side Wall



There are two sets of fasteners to join the saunas' back corners together. After lowering the Back Wall, check to ensure that both sets of fasteners have connected by looking at the corner inside of the sauna. It is possible to connect one set of fasteners and miss the other. If there is an obvious gap in the corner between the two walls the fasteners have not connected and the raising and lowering procedure will need to be repeated.

Second Front Glass Panel

Use the same procedure as for the first glass panel





Insert the Left Side Wall into the channel of floor base while aligning the slot in Side Wall with edge of Front Wall glass panel. USE EXTRA CARE fitting the Side Wall to the glass panel



Connect the second Side Wall to the Back and Front Wall

Use supplied wood screw and pre-drilled hole to secure the top of the side wall to the front wall frame.



Wood Screw

Use the supplied wood screw and the pre-drilled hole to secure the Left Side Wall to the Front Wall frame.



Pull the single plastic connector down and out of the roof before lifting the roof into place.

If you are unable to grab hold of the connector through the small opening in the ceiling, it may be necessary to remove the first T&G board on the top left side of the roof and feed the connector down through the opening.

Install the Sauna Roof

Lift the roof up and over top of the sauna walls. If you are installing the sauna in a restrictive space and are unable to walk down the sides of the saunas, it may be necessary for one person to go inside the sauna.

Hook the right side corners of the roof over the walls then lower the roof toward the left of the sauna.





Connect the 12 Volt power supply wire at the back left corner of the sauna.

This wire brings power to the roof for the stereo and lighting components.

Lower the roof on to the walls



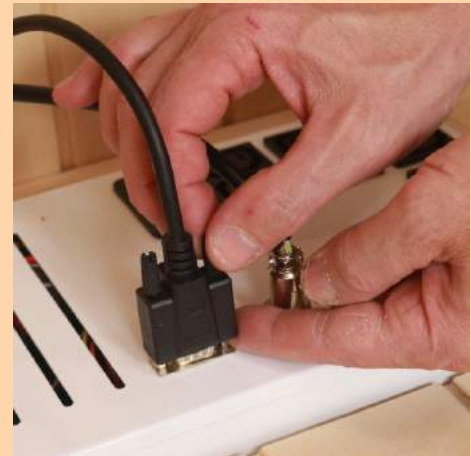
Under-Bench Electrical

NOTE: Do not connect main power cord to your wall outlet yet at this time.



Connect the circular connector to power supply box. Align the groove in connector to properly insert. Thread the cuff of connector on fully.

Attach the 'D-Sub' computer style connector as shown.



Plug in all heater leads to the receptacles on top of the power supply box.

Power Supply Cord

Feed the main power supply cord in through the hole in back wall and insert in to the power supply box. DO NOT plug power cord into your wall outlet until all electrical connections are complete inside of the sauna.



Door Heater Electrical

Connect the coiled wire from the door heater to the connector on the door frame. Ensure that the connector is fully inserted and the threaded cuff is fully screwed on to the door frame connector.



Remove Side Wall Heater Guards

The wooden lattice work in front of the heaters is referred to as the heater guards. These are held on with strong magnets. It is necessary to remove the heater guards from the two side walls in order to install the sauna bench.



Leg Heater

Install the leg heater by lowering it into the brackets mounted on the side walls.

Plug leg heater into the power supply box in floor.

Connecting the ground wire



Install Bench

Angle the Bench into place to clear the Side Wall window frames. The Bench installs foil side down.



Connect the **grounding wire** from bottom side of Bench as shown



Lower the Bench into Position



Install Bench

The bench in your new sauna is reversible. Choose whichever side appeals to you to face upward.



Reinstall the Side Wall heater guards



Install the Door Handle



Glass Glazing Strips

There are 4 strips of flexible glazing material included with your Evolve 20 sauna. These hold the glass panels snugly in the wooden frame.

It may not be necessary to use the glazing strips, or not necessary to use the entire length of the strip, if the glass panels are a snug fit in the wooden frame. If required, install the glazing strip by firmly pressing it into the channel along side the glass panel. The glazing can be installed on the inside or outside of the glass panels

A small wooden wedge is included to help push the glazing strip into the channel.

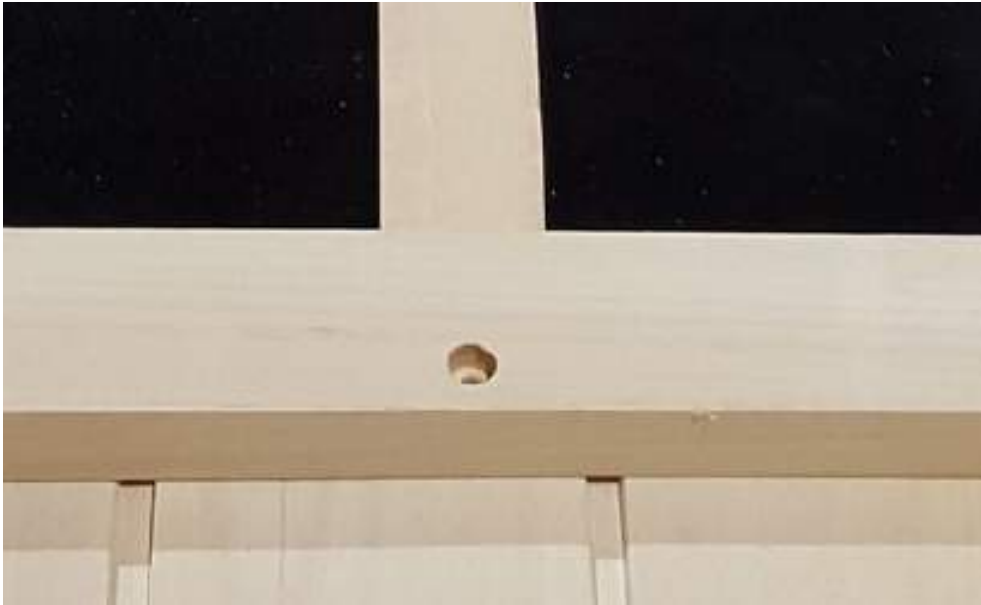


The Chromatherapy LED panel is controlled by the remote control and is NOT connected to the sauna wall control panel.

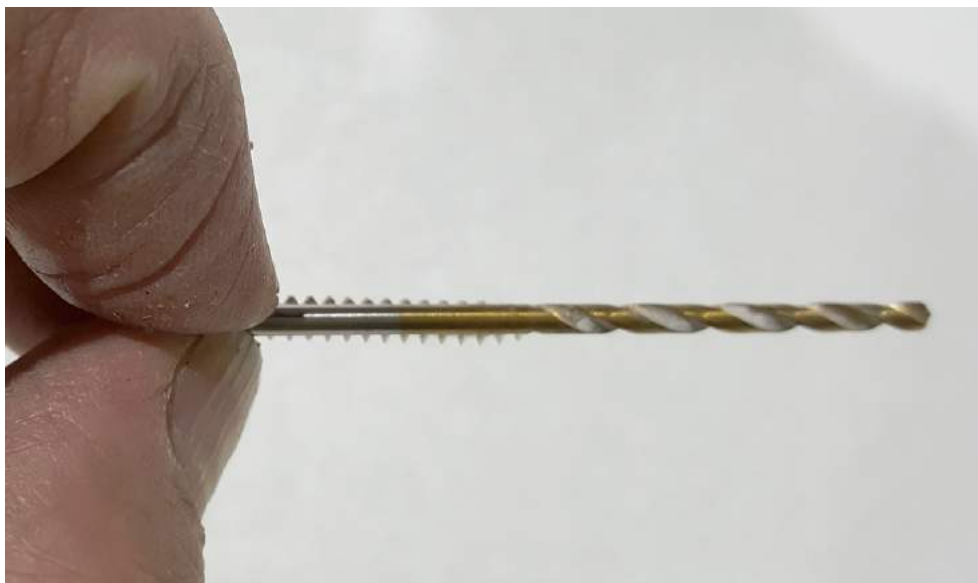


Heater Guards

The heater guards in your new Sun Stream Infrared Sauna are held to the wall with strong earth magnets. If preferred, the heater guards can be screwed directly to the wall for a more permanent and secure attachment. The heater guards are pre-drilled for the attachment screws.



Screws are included to attach the heater guard to the wall. Select a drill bit with a smaller diameter than the screw threads to drill a pilot hole





Drill a pilot hole into the wall through the holes in the heater guards. Do not drill deeper than necessary for the length of the screw.

NOTE: The pilot holes are important to ensure that the tongue and groove wall boards do not split when installing screws.

Install screws to firmly attach heater guard to the wall



Option-L Movable Bench Assembly



Connect bench legs to the inside corners of the frames using supplied wood screws.



Ensure that the legs' ends are flush with the bottom edge of the frames



Attach the leg assembly to the bottom of the bench surface. Choose which surface of the bench you prefer to be the top and bottom.



Accessories



Backrests

Your new Sun Stream Sauna comes equipped with backrests constructed from Western Red Cedar. Position the backrest as pictured to provide lower back support and to position yourself a comfortable distance from the Infrared heater panels.



Cupholder

Many of our customers simply set the cup holder on the bench of the sauna. In the Evolve 10, 20 and 30 saunas, the cup holder can be mounted on the side wall under the heater panels. Be sure to drill pilot holes first for the wood screws to mount cup holder to the T&G wall boards.

Aromatherapy

Enjoy the aroma of your favorite essential oils, such as eucalyptus or lavender, while in the sauna. Add water and a few drops of your essential oil to the aromatherapy glass which can be hung on the wall heater guard.

